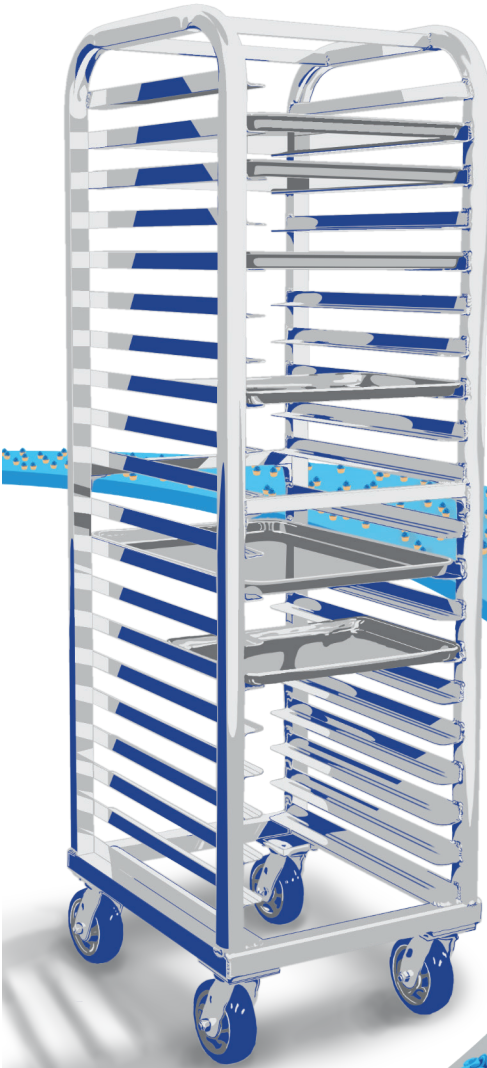


NEWAGE
INDUSTRIAL
NEWAGE

Bakery Booklet





Hand Truck

HT18F10

Lightweight and durable, our hand trucks are easy for anyone to operate!

- Nose plate measures 18" W x 9" D

Dimensions: 22½"W x 53½"H x 19½"D



Hand Truck



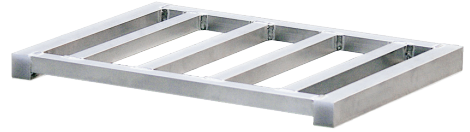
Mini Pallet

Hand Truck Pallet

99627

Designed to work seamlessly with our Hand Truck, this mini pallet provides a larger footprint for larger product.

Dimensions: 21"W x 1½"H x 15½"D



Lug Dolly

99304

Designed to transport and store large volumes of food.

Available in several sizes and styles!



Dimensions: 17¼"W x 41½"H x 28"D

Dunnage Racks

Dunnage Racks keep larger, heavier items elevated, allowing air to circulate around stored items.

Available in three styles and multiple sizes!
Photograph the QR Code with your smart phone to check out our product pages!



4006

6017

2018



Standard Series



Heavy Duty



Lifetime Series

Mixer Bowl Transport Dolly

99936

Designed to simplify moving heavy mixer bowls in and out of place. Swiveling casters allow this dolly to maneuver with ease.

- Accommodates 40-120 quart bowls

Dimensions: 14"W x 7 9/16"H x 14"D



Bowl Dolly

95636

Dolly elevates mixer bowls to a comfortable working height. Swivel casters with brakes make it easy to position bowls in and out of place.

- Ring Diameter of 20 1/4"
- Available in three sizes!

Dimensions: 26 3/4" W x 30 3/8" H x 26 3/4" D



Mixing Bowl Dolly with Pan Rack

51949

This unique rack holds a mixing bowl at a comfortable working height, as well as providing space for pan storage!

- Accommodates a 30 Quart Mixing Bowl.
- Runners spaced on 4" centers, able to support full- and half-size sheet pans.

Dimensions: 22" W x 31 5/8" H x 26" D



Enclosed Transport Cabinet

1292

Unequaled in construction, this unit is designed to keep product safe and endure around-the-clock usage, including truck loading and offloading.

Solid side panels are fabricated using unique, interlocking extrusions with integrated 1/2" guides, spaced on 1 1/2" centers. These low profile guides hold half- and full-size sheet pans by the lip, no obstructions, allowing users to easily space loaded pans for maximum capacity!

Dimensions: 22" W x 31 5/8" H x 26" D



Several options available!
Check out our website!



Photograph this QR Code with your smart phone to see our full line!



Lifetime Series Sheet Pan Rack

4331

Designed to endure the rigors of around-the-clock usage, these units are built to last a lifetime!

Unequaled in (quality) construction, Lifetime Series Racks features ergonomically-friendly "D" tube uprights with heavy-duty, ribbed angle guides. Cross braces are bolstered with gussets for additional strength and stability. The all welded base is reinforced at the corners with threaded plates that casters are bolted to, no holes in the framework that compromises the integrity of the rack!

Dimensions: 21 1/2" W x 73" H x 26" D



Photograph this QR Code with your smart phone to see our full line!



Oven Rack

1942



The TOUGHEST Oven Racks on the market

Our quality exceeds any other stainless steel or aluminum oven rack on the market. Each guide is welded vertically and horizontally, both front and back for maximum strength and durability. Racks are outfitted with heavy-duty, "Hi-Temp" wheel casters.

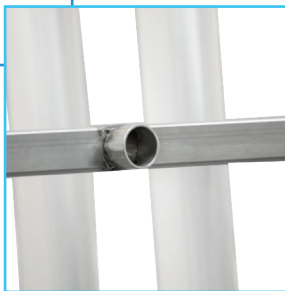
All racks carry a Lifetime Guarantee against rust and corrosion and a Five-Year Guarantee against material defects and workmanship.

Dimensions: 29" W x 69¹³/₁₆" H x 36" D

"Heat Eater" wheels can withstand 425° continuously and 550° intermittently.



Stainless Steel Lifting Devices



New Age Industrial manufactures Oven Racks for the following brands of rotating rack ovens:

- Adamatic
- Baker's Aid
- Baxter
- Gemini
- Hobart
- Lucks
- Revent

**NEWAGE
INDUSTRIAL
NEWAGE**

[Call us today for more information!](#)

1-800-255-0104

Heavy Duty Sheet Pan Racks

These bestselling racks are virtually maintenance free! Aluminum is a lightweight, yet strong, material that resists rust and corrosion, making it ideal for damp or wet environments.



1330S

Dimensions: 28³/₈" W x 69³/₄" H x 19" D

Side-Loading Units only accept full-size sheet pans.



1331

Dimensions: 20³/₈" W x 69³/₄" H x 26" D

End-Loading Units accept half- and full-size sheet pans.

- Angle guides support pans and trays from the bottom, ensuring equal load distribution and the smoothest ride.
- Ribbed guides prevent the galling and flaking that can occur with heavy usage, extending the life of your pans.
- Guides are welded both horizontally and vertically, totalling four inches of welds per guide!
- Casters have a polyolefin wheel with a polyurethane tread that provides more control for easier maneuvering and a softer, quieter ride that won't leave marks on flooring.



- Corners are reinforced with gussets to prevent "racking", units stay stable and square.
- Seams are fully welded and sealed, no cracks or crevices that trap dirt and bacteria.

Photograph this QR Code with your smart phone to see our full line!



Knock Down Sheet Pan Rack

6301



These space-saving racks are designed to store flat, taking up minimal storage space!

- Ideal for light- to medium-duty applications.
- Not suitable for bagels.

Dimensions: 20 $\frac{3}{8}$ " W x 69" H x 26" D

Photograph each QR Code with your smart phone to see our product pages!



Folding Sheet Pan Rack

98678



The same space-saving convenience of a knock down rack — with no tools required. These unique racks transform from 21 $\frac{3}{8}$ " down to 6" in less than a minute! Requires 1/3 of the storage space of a traditional pan rack. Perfect for catering operations or tight spaces!

Dimensions: 21 $\frac{3}{8}$ " W x 72" H x 26" D >>> Folded Dimensions: 6" W x 72" H x 26" D



New Age Industrial Corporation, Inc.

Phone: 800.255.0104 or 785.877.5121 | Fax: 877.877.7687 or 785.877.2616

www.NewAgeIndustrial.com

Nesting Pan Racks - "Z" Type

1331Z

Designed to nest, saving space when not in use, these "Z Racks" allow users to make the most of tight spaces!

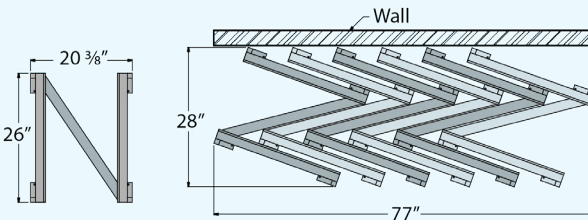
- Angle guides support pans and trays from the bottom, ensuring equal load distribution and the smoothest ride.
- Ribbed guides prevent the galling and flaking that can occur with heavy usage, extending the life of your pans.
- Guides are welded both horizontally and vertically, totalling four inches of welds per guide!
- Seams are fully welded and sealed, no cracks or crevices that trap dirt and bacteria.



- Casters have a polyolefin wheel with a polyurethane tread that provides more control for easier maneuvering and a softer, quieter ride that won't leave scuff marks on floors.
- Corners are reinforced with gussets to prevent "racking", units stay stable and square.
- Nested racks take up one-third less space than traditional sheet pan racks!

Dimensions: 20³/₈" W x 69³/₄" H x 26" D

6 - "Z" Racks = 14.9 sq/ft • 6 - Standard Racks = 22.4 sq/ft



Photograph this QR Code with your smart phone to see our full line!



New Age Industrial Corporation, Inc.

Phone: 800.255.0104 or 785.877.5121 | Fax: 877.877.7687 or 785.877.2616

www.NewAgeIndustrial.com