



**Standard
"Knock-Down"**

6300
6301
6303

- Assembly Required
- Ships "flat" for freight savings
- Can be shipped via UPS



**Standard
All-Welded**

6330
6331
6333

- Ships Common Carrier
- Arrives ready to use!



**Standard All-Welded
with Plate Casters**

7331

- Ships Common Carrier
- Arrives ready to use!



**Heavy Duty
All-Welded**

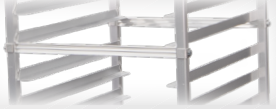
- End- or Side-Loading Units
- Ships Common Carrier
- Arrives ready to use!



4330
4331
4332
4333

- Multiple styles available!
- Ships Common Carrier
- Arrives ready to use!

Knock-Down I-Beam



Includes threaded cross supports for assembly once delivered.



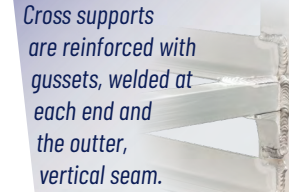
Racks are completely welded and assembled at our factory. Cross supports add strength and stability.



Racks are completely welded and assembled at our factory. Cross supports add strength and stability.



Cross supports are reinforced with gussets, welded at each end. Provides even more strength and durability!



Cross supports are reinforced with gussets, welded at each end and the outer, vertical seam.
Built to last a lifetime!

1/8" x 1 1/2" x .070" angle guides.

Each end is welded 1" diagonally.

1/8" x 1 1/2" x .070" angle guides.

Each end is welded 1" diagonally.

1/8" x 1 1/2" x .070" angle guides.

Each end is welded 1" diagonally.

1/4" x 1 5/8" x .100" angle guides.

Welded both horizontally and vertically.

1/4" x 2" x .100" angle guides.

Welded both horizontally and vertically.

Stem Casters with a 5" polyolefin wheel.



Stem Casters with a 5" polyolefin wheel.



Plate Casters with a 5" polyolefin wheel.



Bolted to caster plates

Plate Casters with a 5" polyolefin wheel with non-marking, polyurethane tread.



Plate Casters with a 6"x2" polyolefin wheel with polyurethane tread. Bolted to 3"x3" Caster Plate.



Available Options:

Caster Locks
Vertical Bumpers

Caster Locks
Pan Stop
Vertical Bumpers

Corner Bumpers
Caster Locks
Pan Stop
Perimeter Bumper
Vertical Bumpers

Corner Bumpers, Caster Locks, Solid Base, 6" Casters, Medical Casters, Pan Stop, Perimeter Bumpers, Prison Package, Vertical Bumpers

Corner Bumpers, Caster Locks, K-Urethane Caster Upgrade, Pan Stop, Perimeter Bumpers, Prison Package, Solid Base.

1 yr One Year Guarantee against material defects and workmanship!

1 yr One Year Guarantee against material defects and workmanship!

1 yr One Year Guarantee against material defects and workmanship!

5 yr Five Year Guarantee against material defects and workmanship!

Lifetime Lifetime Guarantee against material defects and workmanship!

MECHANICAL INDUSTRIAL WAREHOUSE

SHEET PAN RACK COMPARISON GUIDE

“B” • Corner Bumpers

**Must be factory installed*

Four non-marking, grey rubber; mounted to each corner of the unit's base.

Notice: This option adds 2" to the width and depth of the unit.

Corner Bumpers are only available for full frame units. Check model for availability.



“CL” • Caster Locks

CL(A) = Stem caster with 5" wheel • Stem diameter = $\frac{7}{16}$ "

CL(B) = Plate caster with 5" wheel • Hole pattern = $1\frac{3}{4}$ " x 3"

CL(C) = Plate caster with 6" wheel • Hole pattern = 3" x 3"

CL(D) = Plate caster with 6" K-Urethane wheel • Hole pattern = 3" x 3"

**K-Urethane casters are only available for Lifetime Series products.*

CL(E) = Plate caster with 8" wheel • Hole pattern = 3" x 3"

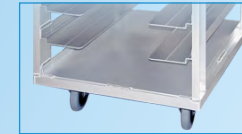


“E” • Solid Base

**Must be factory installed*

Solid aluminum sheet, welded to the top of the unit's base.

Solid Base is only available for full frame units. Check model for availability.



.063"
Sheet

“M6” • Caster Upgrade

Upgrade plate casters from a 5" diameter wheel to a 6" wheel.

Notice: Will change the height of the rack.

“MD” • Medical Caster

Upgrade to medical grade, synthetic rig casters with a 5" TPR wheel.

Notice: Caster Locks are available for some models, check each item for available upgrades.

“PB” • Perimeter Bumper

**Must be factory installed*

Non-marking grey rubber strip, installed around the unit's base

Notice: This option adds 2" to the width and depth of the unit.

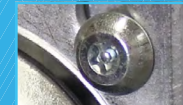
Perimeter Bumpers are only available for full frame units. Check model for availability.



“PP” • Prison Package

PP(A) = Tamper resistant screws.

Other Prison Packages are available for different categories of product.



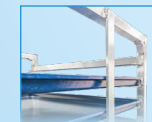
More equipment for
Correctional Facilities
is available!

“PS” • Pan Stop

**Must be factory installed*

Aluminum strap welded to the rear of the unit.

Prevents pans from passing through the back of the rack.



“VB” • Vertical Bumpers

Non-marking black rubber strips, installed around the unit's base

Notice: This option adds 2" to the width and depth of the unit.

Perimeter Bumpers are only available for full frame units. Check model for availability.



#1359 • Rack Cover

Universal cover for End- and Side-Loading Sheet Pan Racks

Made of clear, 12mm thick vinyl. Includes three full zippers.

Fits racks ≥ 23 "W x 64"H x 28"D

Pan Rack Options and Accessories

To add options to a product, add the "code" as a suffix to the model #
**Not all options are available for all products! Check the catalog, website, or give us a call at 1.800.255.0104*