

PACKAGING

AND

WAREHOUSE

SOLUTIONS

NEVAACE INDUSTRIAL INCUBATOR



ERGO STANDS

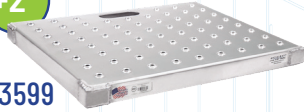
+1"

53598



+2"

53599



+4"

53600



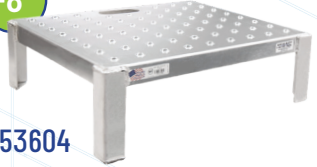
+6"

53601



+8"

53604



The design of common elements, such as workstations, have a significant impact on the occupational health, safety, and wellbeing of workers. Many jurisdictions now place a legally enforceable duty of care on designers and employers to ensure a safe work environment.

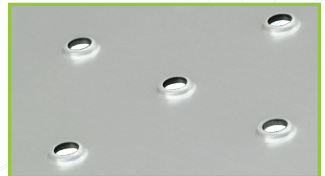
These lightweight, aluminum stands help level the height differences between employees, providing a safe and comfortable work height for everyone.



Integrated Handle

All models include center and corner supports, fully welded for maximum strength and durability.

Deck Size = 20" x 24"



Tread has 3" O.C. Spacing and a disrupted elevation of $\frac{3}{16}$ of an inch.

NEWAGE
INDUSTRIAL
NEWAGE

1 - 8 0 0 - 2 5 5 - 0 1 0 4

Wall Shelves

T-Bar 1121

20" x 36"
Weight Capacity = 700#

**Also available
with Hanging Bar*



18 Gauge - Solid 1125

12" x 36"
Weight Capacity = 150#



12 Gauge - Solid 1125A

12" x 36"
Weight Capacity = 300#



Inverted T-Bar 97285

20" x 36"
Weight Capacity = 500#



**Not Displayed*
Slant T-Bar
97102

Parts Storage, Organization, and Transportation



Lug Dolly 1263

Heavy Duty, Six Lug Dolly.

Dimensions =

$18\frac{3}{4}''\text{W} \times 72''\text{H} \times 26\frac{1}{2}''\text{D}$

Ship Weight = 40#



RGY16825

Lug

$15\frac{1}{2}''\text{W} \times 8\frac{3}{4}''\text{H} \times 25''\text{L}$

Lug and Store 53658

This ergonomic Lug Cart was specifically designed to support lugs securely from the bottom and positioned to allow users to see inside lugs easily. The heavy duty, tubular base provides a smooth ride and additional storage space for lugs or boxes.

Dimensions =

$24''\text{W} \times 42\frac{7}{8}''\text{H} \times 51''\text{L}$

Net Weight = 53#

W.C. = 450#



Security Cabinet 99551

Safe, lockable storage cabinet for valuable or dangerous tools and materials.

Includes four solid, adjustable interior shelves, and a hasp type locking mechanism.

Dimensions =

$37\frac{1}{4}''\text{W} \times 73''\text{H} \times 26''\text{D}$

Shelf Size = $35''\text{W} \times 22\frac{1}{2}''\text{D}$

Ship Weight = 175#



Towable Parts Cart

DWG52449

This towable parts cart features shelves that are easily added, removed, and repositioned for maximum versatility. Equipped with rubber mats that reduce noise and keep parts from shifting and vibrating during transit.

Designed to be used with a Tugger, each cart is outfitted with a tow arm and hitch that allows multiple units to be joined together. The raised signpost makes it easy to identify specific carts within a train.

Dimensions =

29" W x 67" H x 43" L

Top Shelf = 55" H

Net Weight = 149#

Weight Capacity = 1000#

200# per shelf



Double-Sided Parts Cart

DWG53293

Dual-Sided Parts Cart with large shelves on one side and fifty-five small bins on the other; keeps service parts easy to organize, find, and access. Equipped with a mounted clipboard, dual ergonomic handles, writing ledge, and ladder hook—creating the optimum workspace.

Designed to maneuver easily through narrow spaces, the fifth wheel provides a zero-turn radius that is perfect for moving parts around a service bay—eliminating multiple trips.

Dimensions =

44" W x 63" H x 18" D

Net Weight = 213#



Bulk Delivery Truck with Hex Brake Upgrade

BDT18568B

Our best selling Bulk Delivery Truck is equipped to handle large loads with ease!

- Equipped with heavy duty 8" x 2" casters, in a six-wheel configuration to implement a zero-turning radius for effortless maneuvering.
- Upgraded hex brakes lock the cart in place for safe loading and unloading.
- Folds down and stores upright, requires about as much storage space as a hand truck.



Ask about our available accessories and upgrades today!

Dimensions =

18"W x 63"H x 61"L Unfolded

18"W x 17"H x 61"L Folded

Net Weight = 84#

Weight Capacity = 1200#

U-Shaped Platform Truck

99320

Platform truck with a rounded front that reduces damage to walls and other fixtures. Deck is constructed of heavy-duty aluminum channel for maximum strength and durability.

- Equipped with heavy-duty 8" x 2" casters.
- Includes removable handle.
- More sizes available!

Dimensions =

20"W x 44½"H x 36½"L

Net Weight = 43#

W.C. = 2000#





Folding Utility Cart

96856

Our Folding Utility Cart includes the same space-saving storage features as our other folding trucks, with a heavy duty bar deck that's perfect for large, bulky items or boxes.

Check out our collection of folding carts and trucks today!

Dimensions =

16"W x 64"H x 64³/₄"L Unfolded

16"W x 14"H x 64³/₄"L Folded

Ship Weight = 76#

W.C. = 1500#

Narrow Stock Truck

53313A

Capable of holding five hand truck loads worth of product, this versatile cart comes equipped with several features to maximize efficiency!

Holds TWO Removable Shelves
53313RS - Sold Separately

Dimensions =

20"W x 64⁹/₁₆"H x 66³/₄"L

Net Weight = 84#

W.C. = 1200#



Removable Shelf

53313RS

Optional Drop-On Shelf for
Narrow Stock Truck

Dimensions = 18³/₈" x 62³/₈"

Net Weight = 22#

W.C. = 200#



LADDER CARTS

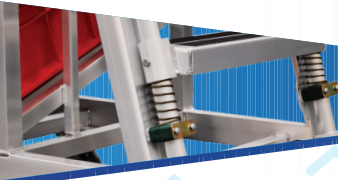
Designed specifically for high volume retail warehouses, our ladder carts feature ergonomic handles for easy ascending and descending and a unique "shin saver" design that allows carts to be maneuvered without kicking a step.

Safety is a priority; carts are equipped with reach bars and spring-loaded stops that keep the cart in place when the ladder is in use.

The reinforced feet are designed to make full contact with the floor and come equipped with rubber shoes.



DWG52735



Slant Shelf Ladder Cart

DWG52735

Reach new heights in this five step ladder cart!

- Slant shelves automatically pull items forward, reducing reaching and other repetitive motions that lead to injuries.
- Six wheel castor configuration allows the unit to turn on a dime.

Dimensions =

26"W x 80"H x 62¹⁵/₁₆"L

Net Weight = 84#

W.C. = 1200#

Contact us for a customized Ladder Cart to Level Up your operations!



NEW
DESIGN!



Folding Ladder Cart DWG52008

This unique cart features two solid shelves, a sturdy T-Bar base, and a folding ladder. Although the ladder is different, it includes all the same safety and design features of all other New Age Ladder Carts, including:

- Feet that make full-contact with the floor when the ladder is in use.
- Extended reach, "shin saver" handle with reach bar.

Dimensions =

24"W x 66 $\frac{1}{8}$ "H x 45 $\frac{13}{16}$ "L*
*Folded

Net Weight = 84#

Weight Capacity = 1200#

Two Shelf Ladder Cart 99640

"Standard" New Age Ladder Cart with two solid shelves and three steps.

- Easily outfit any catalog item with additional accessories or features to take your equipment to the next level!

Dimensions =

22"W x 69 $\frac{1}{2}$ "H x 51 $\frac{1}{2}$ "L

Top Shelf Height = 38"

Shelf Spacing = 21 $\frac{3}{4}$ "

Net Weight = 84#

W.C. = 800#



NEW AGE
INDUSTRIAL
NEW AGE

NewAgeIndustrial.com

Walkie Rider Picking Station DWG53965



**Level
UP**



Unique tote stops aid the sloped ledge in suspending the totes at an ergonomic angle.

The Walkie Rider Picking Station is an ergonomically designed picking cart that enhances productivity by optimizing capacity and minimizing the time and effort required for picking operations. Totes are held at an angle for easy access, stored on a flat shelf when not in use, and can be accessed from both sides for two-sided picking. Additionally, the cart features a pocket for a walkie rider to take over once the picking operation is complete.

Dimensions =

46"W x 49⁵/₈"H x 55"L

Net Weight = 210#

NewAgeIndustrial.com

Robotics Pod DWG53995

Designed for use with Automated Storage and Retrieval Systems, this "pod" eliminates the need for manual cart transport. Enhance your order picking and fulfillment operations by improving operation efficiency of your facility, as well as the wellbeing, health, and safety of your employees.

Aluminum equipment is durable, but lightweight enough that robots and other special equipment can move loaded aluminum equipment without exceeding weight limits. In fact, most of our carts are lightweight enough to be operated by hand, if necessary.

New Age Industrial excels at designing and manufacturing equipment customized to interface with specific machinery or processes within your facility.

Dimensions =

51"W x 52¹⁵/₁₆"H x 41"D

Slant Shelves = 48" W x 23³/₄"D
Shelf Spacing = 23¹/₈"

Solid Bin = 48"W x 5"H* x 14¹/₄"D
*Front lip measures 2" H**

Bin to Base with Solid Cover = 24"



Small or large, we've
got you covered!



DWG53597



DWG53995

Carry All Cart

50548

This feature picking cart is an excellent example of how New Age can easily **Level Up** any product to maximize efficiency.

User-friendly accessories and smart design allows this cart to carry it all!



Clipboard

Dual Handles

Writing Ledge

Document Bin



Scanner
Holster

"Ergo"
Handle

Dimensions =

18" W x 60" H x 49" L

Shelf Spacing:

Top = 15⁵/₈"

Bottom = 21"

Ship Weight = 157#

Picking Cart

98012PC

This "standard" Picking Cart is perfect for small parts or small item order picking. T-Bar shelves are sturdy without being bulky, each shelf includes barriers on three sides to prevent items from sliding off the shelves during loading or transport.

Dimensions =

48" W x 42¹/₂" H x 22" D

Shelf Spacing = 15"

Net Weight = 57#

Shipping Weight = 100#



NEW!

Doubled-Sided Picking Cart

53987

Designed for high-volume picking, this cart features two slant upper shelves on each side and a large, T-Bar base with plenty of space for additional totes or boxes.

Dimensions =

57" W x 63" H x 36" D

Shelf Size = 48"W x 17 $\frac{1}{8}$ " D

Shelf Spacing:

Top = 22"

Bottom = 16"

Net Weight = 150#



Equipped with a spring-loaded center caster that helps the cart naturally roll in a straight line while providing a zero-turn radius for maximum mobility!



New Age Can Help You Get A **HANDLE** On Your Material Handling Needs

At New Age Industrial, we make ergonomics a top priority when designing equipment. We are a Proud Member of the MHI Ergonomic Assist Systems & Equipment (EASE) Industry Group. EASE members promote the practice of good ergonomics in the workplace by providing solutions across a broad spectrum of applications and industries. EASE also engages and collaborates with the National Institute of Occupational Safety & Health (NIOSH) to enrich the group and enhance presentations and training materials.



Order Picker Platforms and Carts

New Age Order Picker Platforms offer many advantages to distribution centers, including the ability to increase the efficiency and productivity of your operations. Aluminum equipment has load capacities comparable to steel, but are much lighter in weight; increasing your lift capacity!

Inventory Platform

51901



Platforms are built to match the height of your man-up Order Picking machine to avoid trip hazards.

Order Picker Platform PPC4048



Mobile, Raised Picking Pallet 53960

This order picker accessory is set to a comfortable work height to prevent operator injuries from repetitive movements.

- Light enough to be maneuvered by hand on the ground.

Dimensions =

46½"W x 36"H x 56¾"L

Fork Pocket to Deck = 27⅝"

Net Weight = 190#

Ship Weight = 222#

W.C. = 1200#

NEW!



Order Picker Platform with Back DWG53521C

This customized Order Picker Platform is perfect for picking larger items or boxes; the tall back and sides prevent items from falling off the platform during loading or transport.

Dimensions =

43 $\frac{1}{16}$ "W x 65"H x 49 $\frac{1}{2}$ "D

Deck Size = 40"W x 48"D

Fork Pocket to Deck = 5 $\frac{5}{16}$ "

Net Weight = 185#

W.C. = 2000#



Variations

Order Picker Platform with Three Sides DWG53608R

Stackable Cage DWG54024



Order Picker Cage with Tow Package

DWG53526R

Level Up
our classic 99664
Order Picking Cage with
a tow hitch and pin! Once
filled, carts can be linked
together and moved throughout
the facility.

Dimensions =

40" W x 76" H x 52" D

Net Weight = 280#



15" Deep Shelf for OP Cage

99664S15

Each Shelf has a
weight capacity
of 250 pounds!



30" Deep Shelf for OP Cage

99664S30



Order Picking Cage

99664



Everything is built to order, which may seem daunting, but that means you can easily add any features to an existing product, alter the size, and add or remove components.

Level Up an item, it will include all the same advantages and your specific requirements!



Order Picker Cage with Removable, Folding Shelves DWG50815C



This Order Picker Cage features two T-Bar shelves that can easily be folded up and out of the way to load or stack larger items or boxes. Users can easy access

product from either side using the doors.

Dimensions =

43 $\frac{1}{16}$ "W x 65"H x 49 $\frac{1}{2}$ "D

Deck Size = 40"W x 48"D

Fork to Deck Height = 5 $\frac{5}{16}$ "

Net weight = 258#

Ship Weight = 328#

Custom Products account for over 80% of our sales annually, because we make it easy!

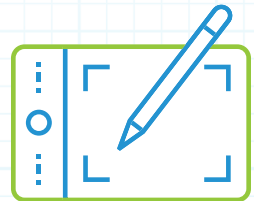
HAVE AN IDEA

Customer has an equipment need that you have a possible solution for, but it is not a standard item.



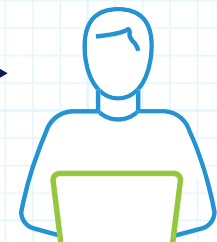
SKETCH IT OUT

Make a simple sketch or line drawing of what the equipment will look like.



WRITE IT DOWN

Describe your new equipment idea and explain why it is needed.



SUBMIT IT

Email us at:

sales@newageindustrial.com

and we will partner you with an in-house engineer — Ready to assist with custom product design, product modifications, questions and more!

New Age Pallets outlast plastic pallets 10 to 1!

Constructed of primary grade aluminum, our pallets are fireproof, recyclable, metal-detectable, UV resistant, stackable, nestable, and fully welded. No open tubing or cracks that damage easily or collect dirt and debris!

Channel Pallets

Constructed entirely of channel extrusions, these pallets have no enclosures.

99557 = 50#

40"W x 5"H x 48"D



Put Away Pallet 53570

Designed to streamline truck loading and unloading, users can sort packages or other items by shelf to go on a truck, into storage, or another part of the facility.

Dimensions =

40" W x 73 $\frac{1}{8}$ " H x 48" D

Shelf Size = 36" W x 47 $\frac{1}{2}$ " D
with a 1 $\frac{1}{2}$ " lip up

Shelf Spacing = 16"

Net Weight = 185#



Tube Frame Pallets

99613 = 49#

40" W x 5 $\frac{1}{4}$ " H x 48" D

New Age can easily build pallets to your exact size requirements, add components to an existing design, or create a customized solution that includes all the same advantages and your specific demands!



Solid Top Pallet

DWG99887

Dimensions =

40 $\frac{1}{4}$ " W x 5 $\frac{3}{8}$ " H x 48 $\frac{1}{4}$ " D

Net Weight = 84#



NEW!

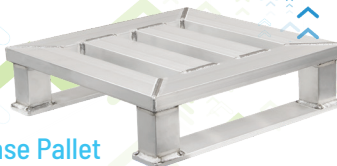


Pallet with
Integrated Rivets

Pallet with
Perforated Cover



Strap Base Pallet



Invest in Aluminum Pallets Today!



Aluminum Pallets are the most durable pallets on the market right now with substantial benefits that outweigh upfront costs:

Fireproof! Aluminum pallets do not create a fire hazard like wood and plastic pallets, so they can be stored anywhere, inside or out. Eliminating the need for additional, specialized, or outdoor storage requirements. This also saves on labor issues since employees won't have to haul pallets around your facility or travel back and forth repeatedly.

Waterproof! Unlike Steel, aluminum never rusts, making it the ideal choice for damp or wet environments. It can easily be power washed or steam cleaned without worrying about corrosion or long drying times.

UV-Resistant! Store your aluminum pallets anywhere, worry free!

- Aluminum isn't weakened by heat or sunlight.
- Stronger in cold temperatures.

Metal Detectable!

Customizable!

Load Capacities in the THOUSANDS!

LOAD WEIGHTS:

STATIC	30,000 LBS.
DYNAMIC	5,000 LBS.
RACKABLE	5,000 LBS.
TRUCKLOAD	510 T.L.
ALUMINUM WEIGHT	50 LBS.



Recyclable! An aluminum pallet will undoubtedly outlast any wood or plastic competitor, but if an aluminum pallet is damaged or made unuseable *it can be scrapped for money. No disposal costs!*