

"Build Your Own" Mobile Picking Cart Selection Guide

Design Your Own Custom Unit in 4 Easy Steps / Using Stock Component Parts

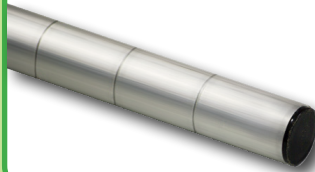
STEP 1

What Size
Base On Unit?



STEP 2

How Tall Should
The Unit Be?



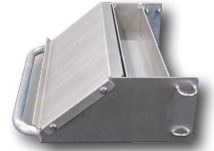
STEP 3

What Types of
Shelving On Unit?



STEP 4

What Types of
Accessories on Unit?



STEP #1 Choose Base

Base units are all welded with plate type casters.
Bases are Heavy Duty T-Bar with 3 different caster configurations.



48PF96



48PF99



50311X5* Base

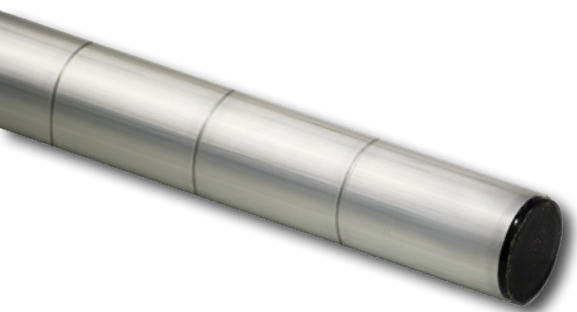


C699
Spring-Loaded

Grainger Item #	Mfr. Model #	Size D-H-L	Weight Capacity	Net Lbs.	Ship Lbs.
Base - Heavy Duty T-Bar with Casters.					
Four 5" plate casters; two swivel (#C450), two rigid (#C460).					
48PF95	50310	24" x 9 ³ / ₈ " x 36"	800 lbs.	25	31
48PF96	50311	24" x 9 ³ / ₈ " x 48"	800 lbs.	28	35
48PF97	50312	24" x 9 ³ / ₈ " x 60"	800 lbs.	32	40
Five Wheel, Zero-Turning - Add "X5" suffix to model #.					
Four 5" plate casters; four swivel (C450), one spring-loaded (C699).					
	50310X5*	24" x 9 ³ / ₈ " x 36"	800 lbs.	33	39
	50311X5*	24" x 9 ³ / ₈ " x 48"	800 lbs.	35	41
	50312X5*	24" x 9 ³ / ₈ " x 60"	800 lbs.	39	45
Six Wheel, Zero-Turning - Add "X6" suffix to model #.					
Six 5" plate casters; four swivel (C450), two rigid (C460).					
48PF98	50310X6	24" x 9 ³ / ₈ " x 36"	800 lbs.	29	35
48PF99	50311X6	24" x 9 ³ / ₈ " x 48"	800 lbs.	33	39
48PG01	50312X6	24" x 9 ³ / ₈ " x 60"	800 lbs.	37	43

* Items Available through Grainger Sourcing Only

STEP #2 Choose Height



Capped aluminum pipe (15/16" o.d.).
(4) Posts Required.

Shelving Posts are marked in 2" increments in a guide. Shelves can be placed at any height needed.

Grainger Item #	Mfr. Model #	Length	Ship Lbs.
18K921	48P	48"	2.5
18K922	54P	54"	3
59YH15	60P	60"	3
18K923	68P	68"	3.6
18K924	72P	72"	3.9
48PF92	76P	76"	4

STEP #3 Choose Shelf



H.D. Style Shelf - Designed to accommodate heavier products and is built for use in all environments, including freezers, coolers, packaging, and storage areas.

Standard Shelves available in three options: Heavy Duty (H.D.), T-Bar, and Solid Brute. Shelf heights can be adjusted as needed.

Grainger Item #	Mfr. Model #	Weight Capacity	Size W_L	Ship Lbs.
48PF67	C2436HD	1100 lbs.	24" x 36"	7.75
48PF68	C2448HD	1100 lbs.	24" x 48"	10.1
48PF69	C2460HD	1100 lbs.	24" x 60"	12.51



T-Bar Shelf - T-Bar shelving provides a smooth, flat surface that is easy to clean and allows boxes to slide for easy loading and unloading. Ts are spaced to allow air to circulate to stored items, excellent for perishables.

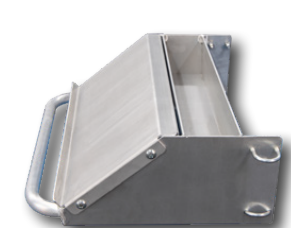
Grainger Item #	Mfr. Model #	Weight Capacity	Size W_L	Ship Lbs.
48PF71	C2436TB	900 lbs.	24" x 36"	8
48PF68	C2448TB	900 lbs.	24" x 48"	10.6
48PF69	C2460TB	900 lbs.	24" x 60"	13



Solid Shelf - Solid Brute Shelves use reinforced bars with a removable solid cover to provide a smooth, flat surface that is easy to clean and slide products across.

Grainger Item #	Mfr. Model #	Weight Capacity	Size W_L	Ship Lbs.
48PF79	2436SB	800 lbs.	24" x 36"	
48PF80	2448SB	800 lbs.	24" x 48"	
48PF81	2460SB	800 lbs.	24" x 60"	

STEP #4 Choose Accessories



a.) Desk/Tray w/Handle



b.) 1 1/2" Tube Handle



c.) Document Tray



d.) Trash Can w/Hanger

Grainger Item #	Mfr. Model #	Item Description	Ship Lbs.
a.) 59YG95	50313	Desk/Tray w/Handle	14
b.) 59YG96	50314	1 1/2" Tube Handle	3
c.) 59YG97	50315	Trash Can w/Hanger	13
d.) 59YG98	50316	Document Tray	15

a.) Through d.) fits 24"D Shelf Only.

d.) Trash Can needs to be attached when setting posts so it is high enough for floor clearance.