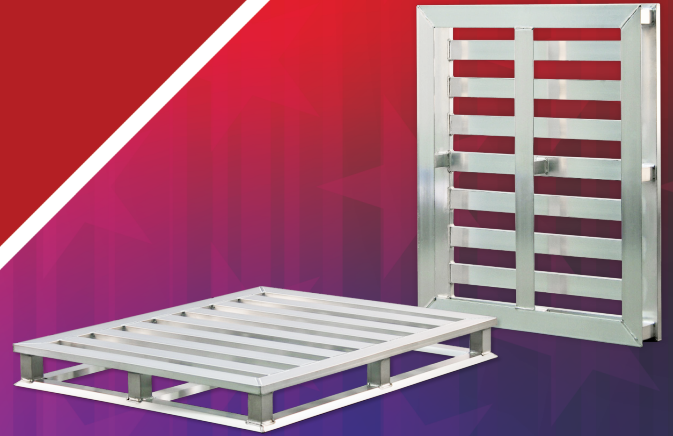


NEW IMAGE
INDUSTRIAL
NEW IMAGE

GRAINGER

2023 TOP SELLERS



**The Products
You Want,
The Quality
You Trust.**

MATERIAL HANDLING FOODSERVICE SUPERMARKET

GRAINGER.COM® | 1.800.GRAINGER

AVAILABLE THROUGH
GRAINGER®
FOR THE ONES WHO GET IT DONE

Approved for use in freezers and displays, as well as packaging and storage areas.

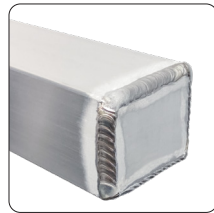
Dunnage Racks raise stored items off the ground to prevent damage to the items due to flooding or dirt. They also allow air to flow underneath the items and provide access for cleaning the floor beneath the racks. These single-level shelving units sit low to the ground and are used for storing perishable products such as food and medical supplies as well as finished goods that must be kept away from water and dirt that accumulates on floors.

- These heavy duty, all-welded aluminum racks keep product organized and off the floor.
- Several standard sizes are available to fit a wide variety of applications.

▶ Heavy Duty



Heavy Duty: Weight Capacity up to 4000-lbs
All welded construction with feet sealed and welded.



Grainger No.	Supplier No.	Size D-H-L	Weight Capacity	Number Of Laterals	Ship Lbs.
59YG14	2001	18" x 8" x 36"	3000 lbs.	4	9
16D665	2029	18" x 12" x 24"	3200 lbs.	4	7
16D666	2020	18" x 12" x 36"	3000 lbs.	4	10
59YG14	2021	18" x 12" x 48"	2500 lbs.	4	14
16D668	2022	18" x 12" x 60"	2000 lbs.	4	17
59YG43*	2052	20" x 12" x 30"	3000 lbs.	4	10
16D662	2004	20" x 12" x 36"	3000 lbs.	4	11
16D663	2005	20" x 12" x 48"	2500 lbs.	4	15
16D664	2006	20" x 12" x 60"	2000 lbs.	4	18
16D661	2015	24" x 8" x 48"	2500 lbs.	5	14
59YG43*	2064	24" x 12" x 42"	2500 lbs.	5	15
59YG27*	2027	30" x 12" x 48"	3000 lbs.	6	19

* Item available through Grainger sourcing.



▶ Standard



Standard: Weight Capacity up to 2000-lbs
All welded frame, feet are fitted with plastic caps.



Grainger No.	Supplier No.	Size D-H-L	Weight Capacity	Number Of Laterals	Ship Lbs.
6TJH1	6017	20" x 8" x 36"	2000 lbs.	4	8
6TJH2	6018	20" x 8" x 48"	2000 lbs.	4	10
6TJH3	6019	20" x 8" x 60"	1500 lbs.	4	13
6TJH4	6004	20" x 12" x 36"	2000 lbs.	4	9
6TJH5	6005	20" x 12" x 48"	2000 lbs.	4	11
6TJH6	6006	20" x 12" x 60"	1500 lbs.	4	14
6TJH7	6014	24" x 8" x 36"	2000 lbs.	5	9
6TJH8	6015	24" x 8" x 48"	2000 lbs.	5	11
6TJH9	6016	24" x 8" x 60"	1500 lbs.	5	14
6TJJ0	6008	24" x 12" x 36"	2000 lbs.	5	10
6TJJ1	6009	24" x 12" x 48"	2000 lbs.	5	12
6TJJ2	6010	24" x 12" x 60"	1500 lbs.	5	15



Modular, Multi-Purpose Stands.

► Fixed Work Tables

Grainger No	Supplier No.	Size D-H-L	Ship Lbs
18K926	21524ES24P	15" x 24" x 24"	15
18K927	21530ES24P	15" x 24" x 30"	22
18K928	21536ES24P	15" x 24" x 36"	19
18K929	21542ES24P	15" x 24" x 42"	20
6ZUD0	21824ES24P	18" x 24" x 24"	17
6ZUD1	21830ES24P	18" x 24" x 30"	19.5
6ZUD2	21836ES24P	18" x 24" x 36"	22
6ZUD3	21842ES24P	18" x 24" x 42"	23.5
6ZUD5	22024ES24P	20" x 24" x 24"	20
6ZUD6	22030ES24P	20" x 24" x 30"	22
6ZUD7	22036ES24P	20" x 24" x 36"	25.5
6ZUD8	22042ES24P	20" x 24" x 42"	25.5
6ZUD9	22048ES24P	20" x 24" x 48"	31
18K932	21530ES30P	15" x 30" x 30"	19
18K933	21536ES30P	15" x 30" x 36"	20
18K935	21548ES30P	15" x 30" x 48"	24
6ZUE0	21824ES30P	18" x 30" x 24"	18
6ZUE1	21830ES30P	18" x 30" x 30"	20.5
6ZUE2	21836ES30P	18" x 30" x 36"	22.5
6ZUE3	21842ES30P	18" x 30" x 42"	24.5
6ZUE4	21848ES30P	18" x 30" x 48"	28.5
6ZUE5	22024ES30P	20" x 30" x 24"	21
6ZUE6	22030ES30P	20" x 30" x 30"	23
6ZUE7	22036ES30P	20" x 30" x 36"	24.5
6ZUE8	22042ES30P	20" x 30" x 42"	26
6ZUE9	22048ES30P	20" x 30" x 48"	28.5
18K936	21524ES36P	15" x 36" x 24"	17
18K937	21530ES36P	15" x 36" x 30"	20
18K938	21536ES36P	15" x 36" x 36"	21
18K939	21542ES36P	15" x 36" x 42"	22.5
18K940	21548ES36P	15" x 36" x 48"	25

Not NSF Certified.



► Mobile Equipment Stands

Grainger No	Supplier No.	Size D-H-L	Ship Lbs
6ZUF5	22024ES24PC	20" x 30" x 24"	30
18K946	21524ES30PC	15" x 36" x 24"	25
6ZUG2	21836ES30PC	18" x 36" x 36"	32.5
6ZUG6	22030ES30PC	20" x 36" x 30"	33
6ZUG9	22048ES30PC	20" x 36" x 48"	38.5
18K952	21536ES36PC	15" x 42" x 36"	31

Not NSF Certified.



Designed to hold heavier equipment that doesn't have its own legs or base such as griddles, broilers, ovens and steamers. These stands are shorter than work tables, so the equipment they hold will sit at a comfortable working height. Top and undershelf have raised marine edges to provide a secure resting area for equipment so it's less likely to slip or slide off.



GRAINGER #18K926

Mobile Equipment Stands have 5" stem type casters which allow the stands to easily be wheeled around to different parts of the kitchen and stored away when not in use. This is particularly helpful if you find yourself using equipment on a seasonal basis or only during certain times of the week. It's also great for allowing multiple work stations to use a single piece of equipment, like a mixer or slicer.



GRAINGER #18K946

- Ships "KD" (knocked down) for easy assembly with Allen wrench (included).
- **One-Year Guarantee** against material defects and workmanship.
- **Lifetime Guarantee** against rust and corrosion.

• Units are shipped knocked down for freight savings.

• Easily assembled with included Allen wrench.



Transport, Pick, Store and More!

► 3-Tier Stock Cart

Designed to hold lugs at a 20° angle for optimal picking. Angled shelves let users see items at the front and back more easily than they could if the items were level.

- Gravity moves items at the back of the shelves forward when items at the front are removed.
- Shelves have a guard rail that prevents items from falling off.
- Bar sides, allow users to see and reposition items on the shelves more easily than mesh sides.



GRAINGER #6LGJ7

Grainger No.	Supplier No.	Size W-H-D	Shelf Size	Shelf Spacing	Ship Lbs.
6LGJ7	97476	59" x 67½" x 26"	24½" x 56"	20"	136

Four 5" plate type casters; two swivel, two rigid.

These dollies can be used for transporting a high volume of material such as bulk food transporting.

- Ideal for bulk food transporting.
- Accepts standard lugs (16"W x 8½"H x 25"L).
- NSF Certified.

► Container Dollies

Grainger No.	Supplier No.	Lug Cap.	Size W-H-D	Ship Lbs.
6ZUC5	6266	2	16¾" x 33" x 29¼"	16
6ZUC9	6263	6	18¾" x 71" x 26"	31

Four 5" stem type swivel casters.



GRAINGER #6ZUC5



GRAINGER #6ZUC9

► Stack and Nest Containers

Useful for a variety of activities from assembly to production, these containers stack when full and nest when empty. These lug tubs contain cross-stacking bottoms and are made of Food Approved Molded Poly.



Grainger No.	Supplier No.	Size W-H-L	Color	Ship Lbs.
12G973	RGY16825	15½" x 8¾" x 25"	gray	4
12G974	0361	Lid For #RGY16825	gray	1

Formed Cross-Stacking Bottom

► Keg Stacker Shelving - Single-Deep

One of our top products for over 40 years. Built to withstand dropped kegs and spilled beer - These heavy duty shelves are easy to clean, and carry a Lifetime Guarantee against rust and corrosion. Perfect for coolers, freezers, displays and storage.

Built for the rigors of keg management, these units consist of two bottom, heavy duty "keg" shelves, constructed of 1½" x 2¾" x .070" wall tubing. Laterals are constructed of 1½" x 21¼" x .15" wall channel. Standard T-Bar top shelf holds lighter weight product such as boxes.



GRAINGER #14G296

Grainger No.	Supplier No.	Size D-H-L	½-Barrel Capacity	¼-Barrel Capacity	Number Of Shelves	Ship Lbs.
Complete Units						
14G293	31842TT7 †	18" x 76" x 42"	4	12	3	49
14G294	NS933	18" x 76" x 60"	6	18	3	71
14G296	1289 *	20¾" x 76" x 93"	10	34	3	98

* Shelves Require Six Posts; This adds 2 ¾" to the overall depth.

† **Not NSF Certified.**



Keg Shelf - Weight Capacity 1500-lb.

T-bar slats provide air flow and easy-on, easy-off of product.



GRAINGER #14G294



GRAINGER #14G3002

► Adjustable Shelving Units

Pot & Pan Rack: The environmentally friendly way to dry pots and pans. Unique t-bar shelf design provides maximum air circulation, with the versatility to hold smaller products and heavy loads. Equipped with four, 5" stem type swivel casters with brakes; Non-marking wheels prevent scuff marks and roll smoothly...Even on tile floors.

- **5-Year Guarantee** against material defects and workmanship.
- **Lifetime Guarantee** against rust and corrosion.



Vented Shelf - Weight Capacity 1500-lb.

T-bar slats provide air flow and easy-on, easy-off of product.

Grainger No.	Supplier No.	Size D-H-L	Number Of Tiers	Ship Lbs.
--------------	--------------	------------	-----------------	-----------

Mobile Unit - 5" stem type swivel casters with brake

14G302	PM2460	24" x 74" x 60"	4	97
------------------------	--------	-----------------	---	----

Shipped knocked down.

Ideal For Closed-Loop & Automated Retrieval Systems

Longer life, lower maintenance.

New Age Aluminum Pallets are the perfect solution for your shipping, storage, and warehouse needs. Aluminum pallets will not rust, rot, warp, or burn; Giving you a better return on your investment.



FIREPROOF

RUST PROOF

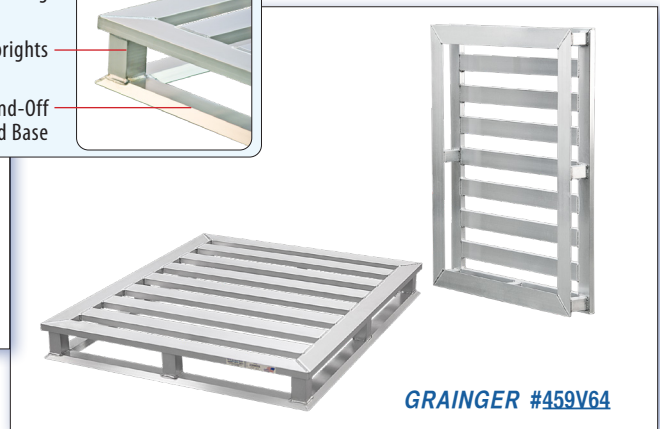
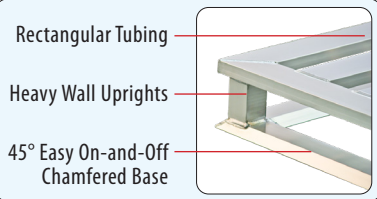
RECYCLABLE

UV RESISTANT

METAL DETECTABLE

REDUCES

- ✓ Product Damage
- ✓ Maintenance Cost
- ✓ Shipping Cost



Grainger No.	Supplier No.	Size W-H-D	Entry Type	Net Lbs.	Ship Lbs.
Channel Pallets					
60HJ20	99557	40" x 5" x 48"	2-Way	51	64
Tube Frame Pallets					
459V63	99613*	40" x 5¼" x 48"	4-Way	48	51
459V64	99749	40" x 5¼" x 48"	4-Way	45	53
459V62	50788	48" x 5¼" x 48"	4-Way	51	53

* Equipped with center base tube as shown.

Custom Sizes Available

LOAD WEIGHTS:

	99557 99613 & 99749	50788
STATIC	30,000 LBS.	20,000 LBS.
DYNAMIC	5,000 LBS.	4,000 LBS.
RACKABLE	5,000 LBS.	4,000 LBS.
TRUCKLOAD	510 T.L.	442 T.L.
ALUMINUM WEIGHT	49 LBS.	51 LBS.

Aluminum Reduces The Overall Weight By 1/3 Compared To Traditional Steel Carts.

► Order Picking Cart

These carts offer many advantages to distribution centers including the ability to increase productivity and efficiency when compared to traditional stacking pallets. Workplace safety is provided through the lightweight design, easy portability, and angled shelving for easy of loading and/or unloading product for flexibility in process implementation.

- The additional ability to customize the design and features has taken these platforms to a new level of innovation over traditional order fulfillment equipment.



Grainger No.	Supplier No.	Lift Type	Size W-H-D	DH	Net Lbs.	Ship Lbs.
Three Adjustable Shelves • 24" D x 36¾" W • Adjustable on 4" Centers						
6LGF4	98852R	Raymond	40" x 88" x 48"	4¾"	267	369
Equipped with four 6" plate type casters; two rigid, two swivel with brake.						
"DH" is the measurement from the top of the fork to the top of the deck.						
Equipped with Oak Clamp Block, 1½" thick, 3½" tall, 12" long and Anti-Tip Bracket.						



GRAINGER #6LGF4

► Forklift Picking Platform

Aluminum platforms have the load capacities of their steel counterparts but have a lower net weight; Increasing your lift capacity.

When compared to traditional stacking pallets, New Age Picking Platforms are superior in workplace safety.



- Replaceable 2" x 4" wood clamp block.
- Anti-slip tape on end.
- Heavy duty aluminum construction.
- Lightweight and durable.
- Lifetime Guarantee against rust and corrosion.



GRAINGER #459V65

Grainger No.	Supplier No.	Lift Type	Size W-H-D	DH	Ship Lbs.
459V65	PPC4048	Crown	40" x 10¾" x 48"	5¼"	144
459V66	PPH4048	Hyster	40" x 11¾" x 48"	6¼"	115
459V67	PPR4048	Raymond	40" x 9½" x 48"	4¾"	115

"DH" is the measurement from the top of the fork to the top of the deck.

Custom Sizes Available.

Increase Productivity, Safety, and Storage Space.



GRAINGER #12G969



GRAINGER #12G970

New Age Platform Trucks are constructed of corrosion-resistant aluminum and are lighter than stainless steel or steel trucks. Decks are low to the ground, minimizing the distance heavy or bulky materials must be lifted when loading and unloading. Narrow deck design allow easy aisle maneuverability.

- Designed for transporting heavy loads from the backroom to the floor.
- Rounded front helps protect walls and displays.
- **Lifetime Guarantee** against rust and corrosion, superior for coolers and freezers.



GRAINGER #12G968

More Productive Than A Hand Truck.

This cart is designed for transporting heavy loads from the backroom to the floor. When you are done, it folds up for easy storage.

This cart has 7½ square feet of deck space and takes up less than 2 square feet of storage space.



GRAINGER #12G968



GRAINGER #12G972



GRAINGER #12G972

Its ability to be stored upright is what makes the 12G972 so unique. The folding handles allow the truck to be stored "on-end" to maximize storage space.

No other truck gives you maximum square feet of deck space for product, and allows you to store the unit upright using a minimal square feet of storage space.



GRAINGER #12G972

Grainger No.	Supplier No.	Size W-H-L	Weight Capacity	Deck Height	Number Of Casters	Ship Lbs.
12G969	1183 *	16" x 41" x 54"	1000 lbs.	9½"	6	40.5
12G970	1184 **	14" x 40" x 39"	1000 lbs.	7¾"	4	23
12G968	95241 *	18" x 63" x 62"	1200 lbs.	9½"	6	54
12G972	BDT18566 *	18" x 61" x 61"	1200 lbs.	10¼"	6	96

* Six plate type casters; four 5" swivel, two 6" rigid.

** Four 5" plate type casters; two swivel, two rigid.

Each Unit Has A Removable Handle.

Multi-Purpose, Multi-Industry Carts.

These two-tier units are ideal for use in coolers, freezers, and dry storage. The heavy-duty design will transport heavy loads up to 1500lbs. per shelf or 2000lbs. rolling capacity.

- **5-Year Guarantee** against material defects and workmanship.
- **Lifetime Guarantee** against rust and corrosion.



GRAINGER #6TJE2



GRAINGER #12G993

Sturdy mobile utility carts are suited for foodservice tasks such as serving, bussing, and general utility.

- T-Bar Shelves allow heavy items to slide on and off easily while providing air flow when used in coolers and freezers.
- **5-Year Guarantee** against material defects and workmanship.
- **Lifetime Guarantee** against rust and corrosion.

Aluminum Drag Hook



GRAINGER #14G276

Allows you to effortlessly reach out and hook onto products, making it simple to move them around.

Grainger No.	Supplier No.	Size (Length)	Ship Lbs.
14G276	1199	37½"	1

► Stocking Carts

Grainger No.	Supplier No.	Size W-H-L	Weight Capacity	Top Shelf Height	Shelf Spacing	Ship Lbs.
Solid Top & Bottom Shelf						
6TJE2	97177	22" x 41" x 37"	2000 lbs.	37.5"	27"	70
Four 6" plate type casters; two swivel, two rigid.						
T-Bar Top & Bottom Shelf with Handle						
12G993	1420	19" x 42" x 48"	1000 lbs.	30"	20"	45
Four 5" plate type casters; two swivel, two rigid.						

Change Your Shelving As Quickly As You Change Your Mind!

Freestanding aluminum cantilever shelving for walk-in coolers eliminates the need for shelving replacements due to rusting. Units are easily adjustable and with elimination of front posts, provide 30% more storage space per shelf!

- Shelves lift-and-lock into place on uprights using locking tabs spaced on 12" centers.
- Extended front legs keep the unit stable; Fitted with an adjustable foot for easy leveling.
- **Lifetime Guarantee** against material defects and workmanship.
- **Lifetime Guarantee** against rust and corrosion.



Moving Shelves Is Easy, Just

“LIFT & CLICK”.

Reconfigure your shelving unit in minutes with minimal effort. Simply lift shelves onto the uprights and click in place.



One Section



Two Sections



T-Bar Shelf • 900 lbs. Weight Capacity

Granger No.	Supplier No.	Depth	UNIT Height	Length	Number of Sections	SHELVES		Ship Lbs.
						Depth	Length	
Three-Tier Unit - T-Bar Style Shelves								
6TJL5	99869	21"	72 1/4"	38 3/4"	1	18"	36"	59
6TJL7	99871	21"	72 1/4"	50 3/4"	1	18"	48"	78
6TJN0	99874	27"	72 1/4"	44 3/4"	1	24"	42"	78
6TJN1	99875	27"	72 1/4"	50 3/4"	1	24"	48"	82
6ZUA4	99876	27"	72 1/4"	62 3/4"	1	24"	60"	90
6ZUA9	99881	27"	72 1/4"	74 3/4"	2	24"	36"	126
6ZUC0	99882	27"	72 1/4"	86 3/4"	2	24"	*	150
6ZUC2	99884	27"	72 1/4"	122 3/4"	2	24"	60"	189

Uprights have locking tabs spaced on 12" centers and an extended leg with adjustable foot.

* Comprised of one 24" x 36" and one 24" x 48" section.

Overhead Storage For Tools, Supplies, and Inventory.

Units mount to the wall making efficient use of vertical space in supply rooms, stock rooms, garages, and other storage areas; Keeping floor spaces clear and items easily accessible and within reach.

Solid Shelves have a marine edge aiding in spill and product containment

Grainger No.	Supplier No.	Size D-L	Weight Capacity	Number Of Hooks	Ship Lbs.
a. T-Bar Wall Shelf / Pot Rack					
6TJJ3	1121PR	20" x 36"	700 lbs.	6	15
6TJJ4	1122PR	20" x 48"	600 lbs.	7	21
6TJJ5	1123PR	20" x 60"	500 lbs.	8	26

Adjustable pot rack hooks slide easily into place to fit your needs.
Additional Pot Hooks Available.



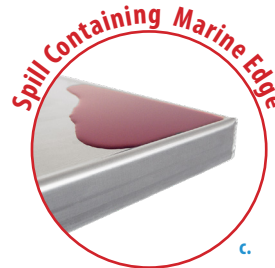
Grainger No.	Supplier No.	Size D-L	Weight Capacity	Ship Lbs.
b. T-Bar Wall Shelves				
6TJJ7	1121	20" x 36"	700 lbs.	11
6TJJ8	1122	20" x 48"	600 lbs.	14
6TJJ9	1123	20" x 60"	500 lbs.	16

Heavy duty shelf design for larger, heavier product.



c. Solid Wall Shelves- Regular 18 GA				
14G289	NS675	12" x 24"	200 lbs.	5
14G291	1126	12" x 48"	125 lbs.	8
14H292	1127	12" x 60"	100 lbs.	9

For lighter loads and smaller product, contains spills.



c. Solid Wall Shelves - Heavy Duty 12 GA				
6TJK2	NS675A	12" x 24"	300 lbs.	6
6TJK3	1125A	12" x 36"	300 lbs.	8
6TJK4	1126A	12" x 48"	225 lbs.	11
6TJK5	1127A	12" x 60"	150 lbs.	13
6TJK7	NS943	15" x 36"	300 lbs.	7
6TJK8	NS793	15" x 48"	225 lbs.	11
6TJK9	94249	15" x 60"	150 lbs.	12
6TJL0	95634	18" x 24"	300 lbs.	8
6TJL1	92093	18" x 36"	300 lbs.	10
6TJL2	92094	18" x 48"	225 lbs.	13
6TJL3	94136	18" x 60"	150 lbs.	15
6TJL4	95883	24" x 24"	300 lbs.	10

Thick, 12 gauge for heavier loads. Performs like stainless steel.



d. Inverted Shelves - T-Bar - Not NSF Certified				
59YH22*	97285	20" x 36"	500 lbs.	11

* Item available through Grainger sourcing.



Weight Capacity = Determined by installation method and type of wall



Transport, Organize and Store a Mass Amount of Product With One Unit!

Save space and preserve freshness by storing baked goods on the right Pan Rack for the job. Available in a wide range of sizes and holding capacities.

▶ 1/2-Size Sheet Pan Rack

Grainger No.	Supplier No.	Size W-H-D	Pan Capacity	Runner Spacing	Top Type	Ship Lbs.
Regular 1/2-Size - End Loading						
6THX0	1311	20 ³ / ₈ " x 38" x 26"	10	3"	Stainless	42
6THX1	1312	20 ³ / ₈ " x 38" x 26"	10	3"	None	30
6THX3	1321	20 ³ / ₈ " x 38" x 26"	6	5"	Stainless	35

Four 5" stem type swivel casters.

- Accommodates 13" x 18", 14" x 18", and 18" x 26" sheet pans.



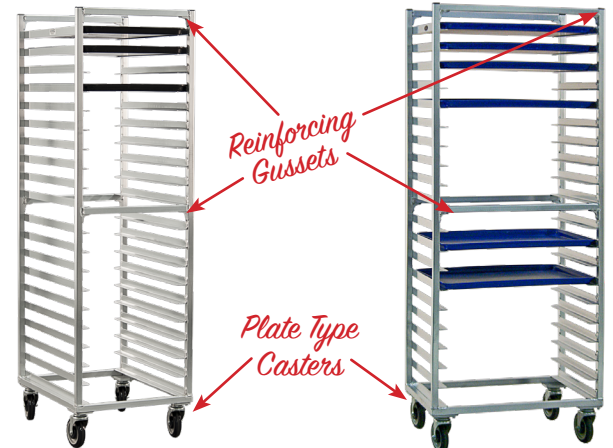
GRAINGER #[6THX0](#)

▶ Full-Size - Heavy Duty

Grainger No.	Supplier No.	Size W-H-L	Pan Capacity	Runner Spacing	Ship Lbs.
End Loading Racks					
6THX7	1331	20 ³ / ₈ " x 69 ³ / ₄ " x 26"	20	3"	56
6THX8	1332	20 ³ / ₈ " x 69 ³ / ₄ " x 26"	15	4"	52
6THX9	1333	20 ³ / ₈ " x 69 ³ / ₄ " x 26"	12	5"	48
6THY0	1334	20 ³ / ₈ " x 69 ³ / ₄ " x 26"	10	6"	43
Side Loading Racks					
6THY3	1331S	28 ³ / ₈ " x 69 ³ / ₄ " x 19"	20	3"	50
6THY4	1332S	28 ³ / ₈ " x 69 ³ / ₄ " x 19"	15	4"	46
6THY5	1333S	28 ³ / ₈ " x 69 ³ / ₄ " x 19"	12	5"	46
6THY6	1334S	28 ³ / ₈ " x 69 ³ / ₄ " x 19"	10	6"	46

Four 5" plate type swivel casters.

- Accommodates 13" x 18", 14" x 18", and 18" x 26" sheet pans.



End Loading
GRAINGER #[6THX7](#)

Side Loading
GRAINGER #[6THY3](#)

▶ Full-Size - Standard

Grainger No.	Supplier No.	Size W-H-L	Pan Capacity	Runner Spacing	Ship Lbs.
All-Welded Units					
6THZ0	6330	20 ³ / ₈ " x 69" x 26"	30	2"	50
6THZ1	6331	20 ³ / ₈ " x 69" x 26"	20	3"	38
6THZ2	6333	20 ³ / ₈ " x 69" x 26"	12	5"	33
Knocked Down Units					
6THY7	6300	20 ³ / ₈ " x 69" x 26"	30	2"	49
6THY8	6301	20 ³ / ₈ " x 69" x 26"	20	3"	39
6THY9	6303	20 ³ / ₈ " x 69" x 26"	12	5"	32

Four 5" stem type swivel casters.

- Accommodates 13" x 18", 14" x 18", and 18" x 26" sheet pans.



All Welded
GRAINGER #[6THZ1](#)

Knocked-Down
GRAINGER #[6THY7](#)

! All sheet pan racks quoted hold USA standardized 18 x 26" sheet pans (17¹/₈ x 25⁷/₈" actual). We are not responsible for pans that do not meet the industry standard, which may not fit our racks.

Lifetime Guaranteed For As Long As You Own It.

Designed to endure the rigors of around-the-clock usage, these units are ideal for use in the foodservice, hospitality, and healthcare industries, including correctional facilities and educational institutions.

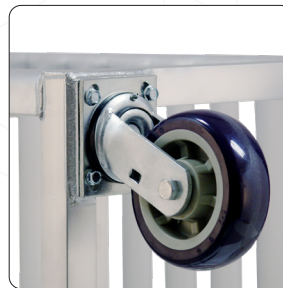
Runners support pans and trays from the bottom, providing equal load distribution for "worry-free" transport. Ribbing on the guides allows pans to slide on and off with ease, minimizing the galling or flaking that can occur with heavy usage.

★ Sheet Pan Rack

Grainger No.	Supplier No.	Size W-H-D	Pan Capacity	Angle Spacing	Ship Lbs.
6TJC1	4331	21½" x 73" x 26"	20	3"	83

Four 6" x 2" plate type swivel casters.

Accommodates 13" x 18", 14" x 18" and 18" x 26" pans.



GRAINGER #6TJC1

Ideal for facilities that require a durable rack to meet the needs of their around-the-clock usage.

Designed for institutional, correctional, casino, hotel, university and hospital use. Built with heavy duty "D" tube construction, our full size racks are "user friendly" and strong.

- Ergonomically friendly radius uprights with reinforcing cross bars.
- Heavy Duty, 6" x 2" casters allow for maximum mobility.
- **Lifetime Guarantee** against material defects and workmanship.
- **Lifetime Guarantee** against rust and corrosion.
- NSF Certified.

★ Wide-Angle | Stepped-Angle Pan Rack

Grainger No.	Supplier No.	Size W-H-D	Angle Spacing	Ship Lbs.
--------------	--------------	------------	---------------	-----------

Wide-Angle Pan Racks

6TJC4	4339	21½" x 73" x 26"	3"	99
-------	------	------------------	----	----

Pan Capacity = (20) 18" x 26", (19) 12" x 20", (40) 13" x 18", (40) 14" x 18"

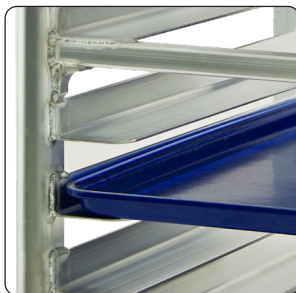
Four 6" x 2" plate type swivel casters.

Accepts: Roast & Bake Pans 20" x 22", 18" x 26" & 10" x 20", Steamtable Pans 12" x 18" & 12" x 20", Bun Pans 18" x 13" & 18" x 26", Service Trays 15" x 20" & 14" x 18", Maxi Pan 20¾" x 25½", Standard GastroNorm Pans 20¾" x 25½"

Note: Angle Runners Are NOT ADJUSTABLE.



GRAINGER #6TJC4



Transport, Store and More!

Enclosed cabinets are excellent for catering and outdoor events, the unique side panels are designed for loading these cabinets up to maximum capacity with ease!

Solid side panels are fabricated using unique, interlocking extrusions with integrated 1/2" guides spaced on 1 1/2" centers. These low profile guides hold half- and full-size sheet pans by the lip, no obstructions, allowing users to easily space loaded pans for maximum capacity.

- **Five-Year Guarantee** against material defects and workmanship.
- **Lifetime Guarantee** against rust and corrosion.
- NSF Certified.

► Enclosed Transport Cabinet - Heavy Duty

Grainger No.	Supplier No.	Size W-H-D	Casters	Pan Capacity	H.D. Base	Ship Lbs.
Full Size Enclosed Pan Rack — 1 1/2" Runner Spacing						
6TJC9	1290	20 7/8" x 68" x 27 3/8"	5"	40	Yes	159

Four 5" plate type swivel casters.

Unit holds 13" x 18", 14" x 18", and 18" x 26" pans by the lip.



GRAINGER #6TJC9



Document Clip



Door Latch



Caster Plates

► Nesting Pan Rack - "Z" Type

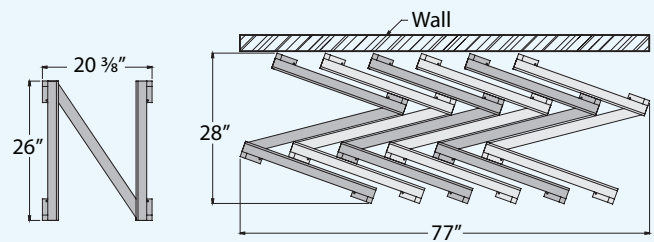
Z-Style Racks Take Up 30% Less Floor Space Than Standard Bun Pan Racks.

Designed to nest together when not in use, these racks are perfect for high production areas.



GRAINGER #6TJA4

6 "Z" Racks = 14.9 sq/ft • 6 Standard Racks = 22.4 sq/ft



Grainger No.	Supplier No.	Size W-H-D	Pan Capacity	Runner Spacing	Ship Lbs.
Full-Size Nesting "Z" Pan Racks					
6TJA5	1330Z	20 3/8" x 69 3/4" x 26"	30	2"	86
6TJA4	1331Z	20 3/8" x 69 3/4" x 26"	20	3"	68

Four 5" plate type swivel casters (#C450).

Designed to accommodate 13" x 18", 14" x 18" and 18" x 26" pans.

Transport, Organize and Store A Mass Amount of Product With One Unit.

Organize your pans, trays and service ware making more space for other storage in back rooms or coolers.

► Steamtable Pan Rack

Designed especially for 12"x 20" steam table or hotel pans, these racks are ideal for transporting multiple pans and product between the kitchen, holding, serving, and bussing. Suitable for hot and cold applications, these racks are beneficial for preparing large amounts of food.



Extra gussets are welded in all corners to prevent "racking".



End Loading
GRAINGER #6TJA1

Side Loading
GRAINGER #6TJA3

Grainger No.	Supplier No.	Size W-H-D	Pan Capacity	Runner Spacing	Ship Lbs.
Full Size - End Loading Unit					
6TJA1	1505	16¼" x 69" x 22¾"	18	3"	42
Full Size - Side Loading Units					
6TJA3	1509	23⅞" x 69¾" x 27"	36	3"	52

Four 5" plate type swivel casters.

All units accept 20" x 20" steamtable / hotel pans.

► Mobile Dish Rack

Ideal for transporting and storing cups and glassware from the service area to the back room. This cart eliminates the stacking and re-stacking of baskets by allowing quick, easy access to all dish baskets simultaneously; no contact storage prevents cross contamination and promotes faster drying time.

Allows quick, easy access to all dish baskets simultaneously.



GRAINGER #6TJF1

Grainger No.	Supplier No.	Size W-H-D	Tray Capacity	Runner Spacing	Ship Lbs.
Roll-In Unit					
6TJF1	97142	22" x 64" x 20 ½"	9	6"	45

Four 5" plate type swivel casters.

All units accept 20" x 20" dish racks.



Ribbed Angle Runners Permit Racks To Slide Easier



Keep Commercial Kitchen Canned Food Inventory Organized and Accessible.

Angled shelves allow cans to roll to the front as items are used, keeping them continuously visible and available when needed.

▶ 1/2-Size Can Rack

Grainger No.	Supplier No.	Size W-H-D	Can Cap		Top Style	Ship Lbs.
			#10	#5		
1/2-Size - Can Rack (41" Tall)						
6TJF9	1225	25" x 41" x 35"	72	96	Stainless	73
6TJG0	1226	25" x 41" x 35"	72	96	Aluminum	60
6TJG1	1226NT	25" x 41" x 35"	72	96	None	50
Counter Height - Can Rack (35" Tall)						
6TJG4	1236	25" x 35" x 35"	54	72	Aluminum	57

Template for mounting Edlund No.1 Can Opener included.
Four 5" plate type casters; two swivel with brake and two rigid.



▶ Full Size Can Rack - Heavy Duty

Grainger No.	Supplier No.	Size W-H-D	Can Capacity				Casters	Ship Lbs.
			#10	#5	#2½	#303		
6TJG7	1250*	25" x 71" x 35"	162	216**	**	No	100	
6TJG8	1250CK	25 ½" x 78" x 35"	162	216	**	**	Yes	125

* Units without casters are equipped with adjustable feet.

***** Casters can not be retrofitted - Factory option only. *****

"CK" Units: Equipped with four 6" plate type casters — two swivel w/ brake(#C495), two rigid (#C500).

- Superior quality.
- Adjustable feet are standard with stationary units.
- Lifetime Guarantee against rust and corrosion.
- NSF Certified.



▶ Full Size Can Rack - Standard

Grainger No.	Supplier No.	Size W-H-D	Can Capacity		Casters	Ship Lbs.
			#10	#5		
6TJH0	6259	25" x 71" x 35¼"	162	216	No	86

Adjustable Feet Standard.

****Casters Can Not Be Placed On This Unit****

- Equipped with adjustable feet.
- Stores up to (162) #10 cans or (216) #5 cans in only six square feet of space.
- Provides automatic stock rotation when loaded from the rear.
- Inclined angle glides give you easy access to a large number of cans with one unit.



Counter Height
GRAINGER #6TJG4



1/2-Size
GRAINGER #6TJF9



GRAINGER #6TJG8



Extended Can Glides
Provide Easy Can
Retrieval



GRAINGER #6TJH0

