

DUNNAGE RACK

Comparison Chart

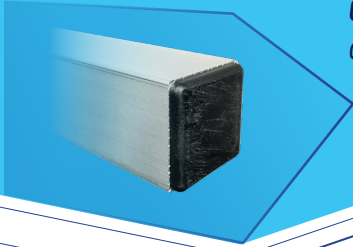
6000 SERIES



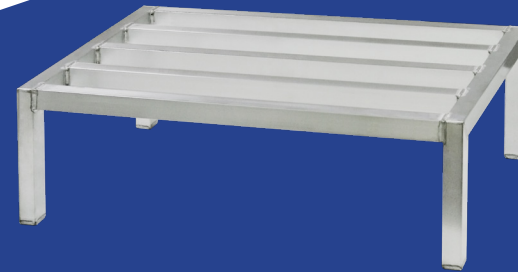
Standard-Duty

- Constructed of 1½" x 1½" square tubing with a .070" thick wall.
- All seams are completely welded and sealed from dirt and debris.
- Legs are sealed with a plastic cap.

One Year Guarantee against material defects and workmanship.



2000 SERIES



Heavy Duty Series

- Constructed of 1½" x 1¾" tubing with a .070" thick wall.
- All seams are completely welded and sealed from dirt and debris.
- Legs are sealed shut with an .125" thick aluminum cap.

Five Year Guarantee against material defects and workmanship!



Mobile Dunnage Rack with Upgrades!

- Constructed of 1½" x 1¾" tubing with a .070" thick wall.
- All seams are completely welded and sealed from dirt and debris.
- Upgraded with a custom tow loop to be used with our 1199 Drag Hook.
- Outfitted with a removable handle, Model # 1208, and 5" plate type casters; two rigid, and two swivel with a brake.