

DUNNAGE RACK

Comparison Chart

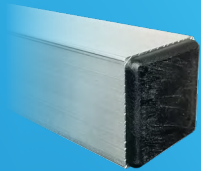
6000 SERIES

Standard Duty

- Constructed of 1½" x 1½" square tubing with a .070" thick wall.
- All seams are completely welded and sealed from dirt and debris.
- Legs are sealed with a plastic cap.



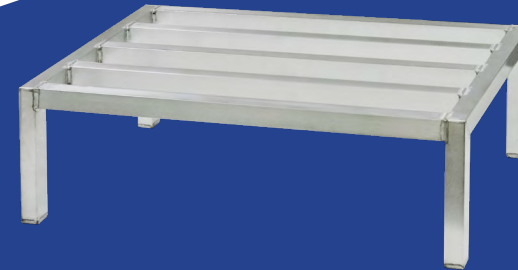
One Year Guarantee against material defects and workmanship.



2000 SERIES

Heavy Duty

- Constructed of 1½" x 1¾" tubing with a .070" thick wall.
- All seams are completely welded and sealed from dirt and debris.
- Legs are sealed shut with an 1/8" thick aluminum cap.



Five Year Guarantee against material defects and workmanship.



Lifetime Series

- Constructed of 2" x 2" square tubing with a .100" thick wall.
- All seams are completely welded and sealed from dirt and debris.
- Legs are sealed shut with an 1/8" thick aluminum cap.



4000 SERIES



Lifetime Guarantee against material defects and workmanship!

**NEW AGE
INDUSTRIAL
NEW AGE**
www.NewAgeIndustrial.com