

Job: \_\_\_\_\_

Item: \_\_\_\_\_

Quantity: \_\_\_\_\_

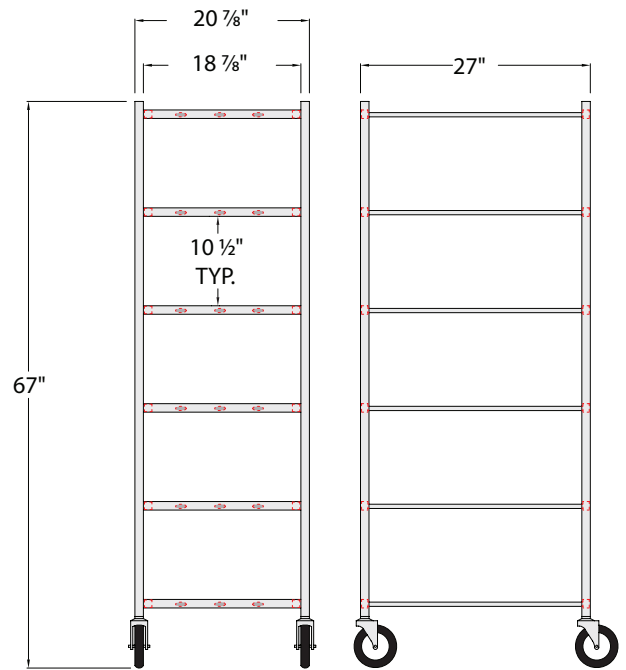
## Universal Cart - Economy

This cart is ideal for transporting various sized platters, trays, boxes, and lugs. Oval tubing shelves provide easy product access and selection.

- Framework is constructed out of 1" x 1" x .070" wall tubing.
- Shelves are constructed out of ½" x 1¼" oval tubing.
- Equipped with four 5" stem type swivel casters.
- One-Year Guarantee against material defects and workmanship.
- Lifetime Guarantee against rust and corrosion.
- NSF Certified.



1356M



1356M

Model No.	Size W-H-L	Pan Cap.	Runner Spacing	Ship Lbs.
<b>For Platters, Pans, or Boxes Up To 18"W x 26"L</b>				
1356M	20 7/8" x 67" x 27"	6	10 1/2"	45

Four 5" stem type swivel casters (#C480).

**Options:**

"CL(A), "VB" — see catalog for details.

Distributed by:

This information is for general sales and engineering use only. New Age Industrial reserves the right to modify or make changes at any time without notice to materials and specifications.

